



## Sonix 600 and 880 Gas Meters

### Accuracy, Reliability, Performance

With its compact size and simple, no-moving parts design, Sonix offers unprecedented levels of accuracy, reliability, and performance available in no other gas meter - all backed by the industry's best warranty.

Sonix is nothing short of a transformation in gas metering. Unlike diaphragm meters, Sonix completely eliminates moving parts and measures gas flow through proven ultrasonic technology. This fully-electronic platform houses extensive diagnostic capabilities and highly accurate temperature correction right in the meter without requiring additional, bulky equipment. What's more, its compact size drastically reduces installation and labor costs and space requirements.

### Available Diagnostics

- Meter health
- Reverse Flow
- Tampering
- Air in the meter

### FEATURES

- No mechanical parts
- Hourly data logging for 60 days
- Programmable fixed factor pressure compensation
- Internal thermistor temperature compensation
- Sonic nozzle proves proof verification
- Warranty of 15 years meter; 10 years battery

### GENERAL

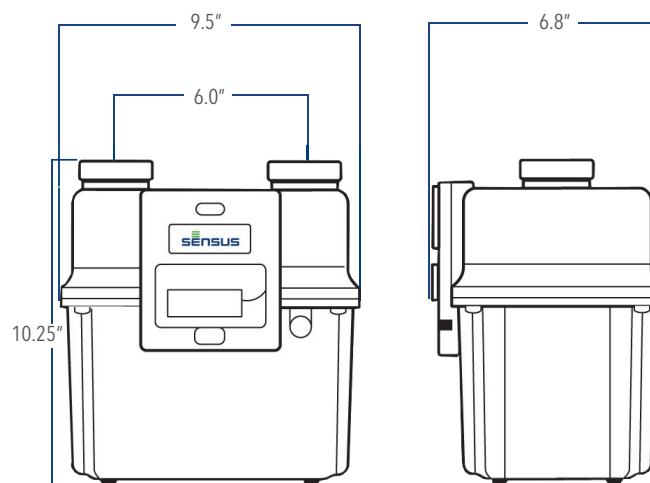
Meter Type	Single path ultrasonic
Configuration	Top in/top out, 6" center
Mounting	Connections "up" preferred
Flow Conditioning	No filter/flow conditioning required

### COMMUNICATIONS

Optical Reading Port	Requires optical probe and SONIXCOM software
Pulse Type	Form A
Pulse Duration	50 ms
Pulse Rate	User scaleable 1 or 10 cu ft/pulse; 100 or 1000 cu ft/pulse or liter/pulse
AMR Type	Any Form A pulse collector

### PHYSICAL & POWER

Display	3/8" LCD index; 4, 5, or 6 digits with 3 digit alarm/high resolution index
Case	383 aluminum alloy
Dimensions	10.25" x 9.5" x 6.8"
Weight	12 lbs.
Voltage	3.6 vDc
Battery	Field replaceable single "D" cell lithium thionyl chloride
Flash memory	Permanent information retention without power



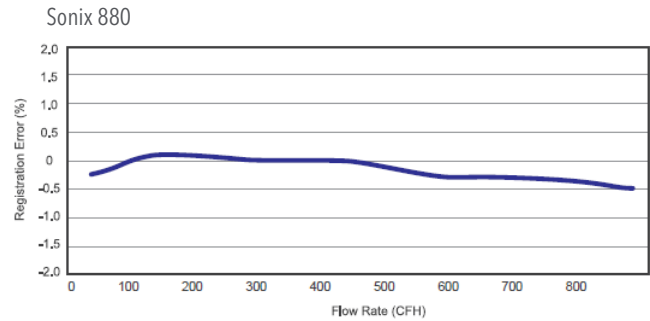
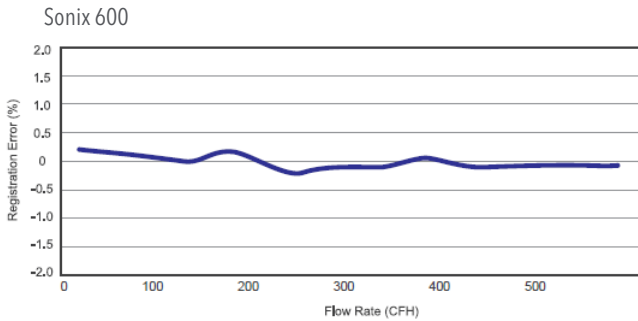
For pulse output version the recommended clearance required at the back of the meter for the output cable is 4.14 inches from the center line of the gas connections.

# Sonix 600 and 880 Gas Meters

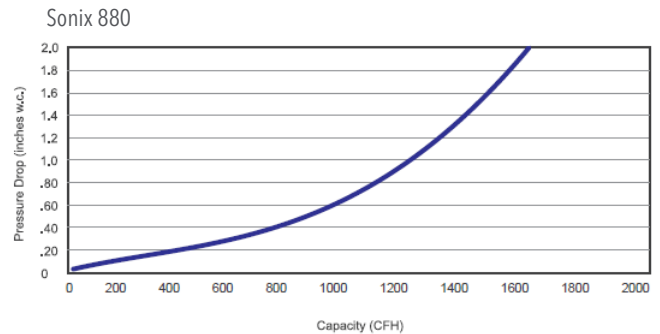
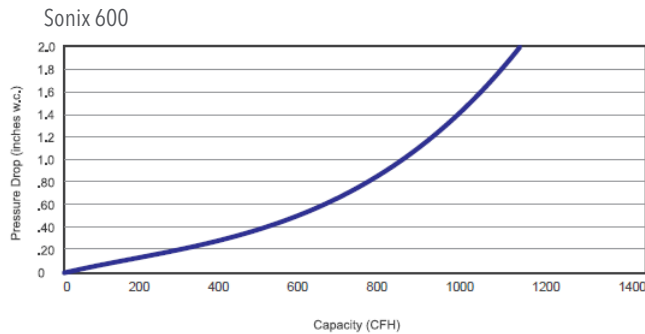
## SPECIFICATIONS

		Sonix 600	Sonix 880
Capacity/ Range	ΔP of 0.5" w.c.	600 cfh 24:1 (±1%: 25 - 565 cfh) 100:1 (±2%: 6 - 25 cfh)	880 cfh 22:1 (±1%: 40 - 880 cfh) 110:1 (±2%: 8 - 40 cfh)
	ΔP of 2.0" w.c.	1130 cfh 45:1 (±1%: 25 - 1130 cfh) 193:1 (±2%: 6 - 25 cfh)	1625 cfh 40:1 (±1%: 40 - 1625 cfh) 203:1 (±2%: 8 - 40 cfh)
Low Flow Cutoff		1.0 cfh per ANSI B109.2	
Connections		1-1/4" NPT Male, 20 Lt, 30Lt, 45Lt, 1A Spg., #2Spg., #3Spg.	30Lt, 45Lt, 60Lt, 1A Spg., #2Spg., #3Spg., #4 Spg., 1-1/2" FTP, 2" FTP
Maximum Allowable Operating Pressure		20 psig	
Temperature Range		-30° to +130°F (-35° to +55°C) ±1.0% correction; -30° to +150°F (-35° to +66°C) ambient	
Gas Application		Clean, dry natural gas insensitive to liquid, particulate, and freezing; gases with specific gravity between 0.6 (Natural Gas) and 1 (air).	
Metrology Standards		Measurement Canada AG-0514 to PS-G-06	
Safety		CSA C22.2 No 213-M1987, First Edition: Non-incendive Electrical Equipment for Use in Class I, Div. 2 Hazardous Locations UL1604, Third Edition, Rev. 2/3/04: Electrical Equipment for Use in Class I and Class II, Div. 2, and Class III Hazardous Classified Locations	

## Proof Curves



## Capacity Curves



Sensus | 637 Davis Drive Morrisville, NC 27560 | 1-800-638-3748

©2020 Sensus. All products purchased and services performed are subject to Sensus' terms of sale, available at either [sensus.com/TC](http://sensus.com/TC) or 1-800-638-3748. Sensus reserves the right to modify these terms and conditions in its own discretion without notice to the customer. The Sensus logo is a registered trademark of Sensus.

This document is for informational purposes only, and SENSUS MAKES NO EXPRESS WARRANTIES IN THIS DOCUMENT. FURTHERMORE, THERE ARE NO IMPLIED WARRANTIES, INCLUDING WITHOUT LIMITATION, WARRANTIES AS TO FITNESS FOR A PARTICULAR PURPOSE AND MERCHANTABILITY. ANY USE OF THE PRODUCTS THAT IS NOT SPECIFICALLY PERMITTED HEREIN IS PROHIBITED.