



The most reliable pilot for production flares... guaranteed!

System Overview

The Hotspot Pilot Ignition system is one of the most important components on a flare system to ensure a reliable ignition source is continuously available. Our ignition system utilizes the most reliable ignition probe technology as well as a high stability gas pilot to ensure your pilot remains lit at all times. The Hotspot Ignition System can be installed on new or existing flare stacks.



High Energy Ignition (HEI) Probe

The HEI probe is the most reliable ignition technology available on the market that provides excellent resistance to high moisture environments. The HEI probe is superior to other ignition probe designs such as High Voltage (also known as high tension) that commonly fail due to moisture, heat from the flare flame, and general ceramic insulator failures. The Hero HEI probe is fully enclosed inside of the pilot and is positioned away from the pilot and / or flare flame.

Pilot Flame Monitor

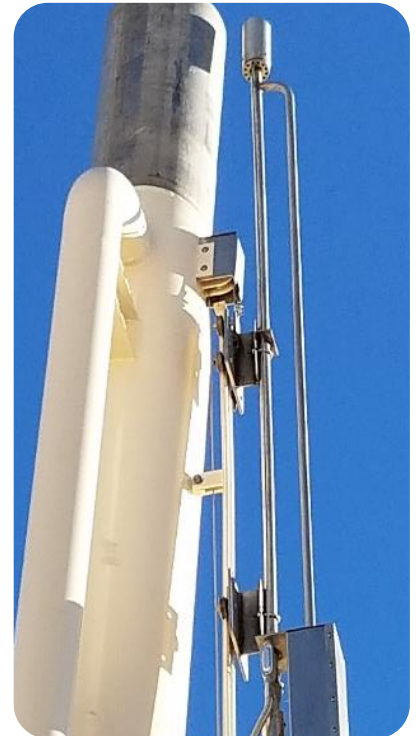
- Continuous flame monitoring (*Type K Thermocouple*)
- Panel pilot "lit" indication light
- Remote flame indication (*dry contacts available*)
- Remote start / stop (*optional feature*)

Standard Scope of Supply

- High stability gas pilot (Model: HS)
- Ignition control panel (Model: EP or ES)
- Gas regulator with filter & gauge (Model: GPC)
- 50' long type K thermocouple wire (Model: TC-50)
- Free standing control rack (Model: CRH)

Optional Items Available

- Pilot mounting brackets (PN: PMB)
- SO Cord (PN: SO- *_)
** must specify length required at time of order*



Ignition Control Panel

Model:	ES – Solar / Battery Powered EP – 115VAC
Size:	20" x 20" x 8"
Area Classification:	None Classified
Enclosure Rating:	Nema 4 (painted carbon)
Power Input:	Standard: Solar / Battery Optional : 115VAC
Remote Flame Monitoring:	(1) Set dry contacts (1) 0 – 10VDC output
Pilot "on" Indication	<ul style="list-style-type: none"> Actual temperature readout indication Panel green indication light

High Stability Gas Pilot

Model:	HS
Fuel Requirements:	Natural Gas: 18 – 20 Psig (55 SCFH) Liquid Propane Gas: 8 – 10 Psig (25 SCFH)
Gas Connection:	½" FNPT
Material of Construction:	100% 304SS
Flame Monitoring:	Type K Thermocouple

Gas Pilot Controls

Model:	GPC
Regulator Connection:	½" FNPT
Input Max Pressure	250 Psig
Pressure Gauge Range:	0 – 30 psig



High Stability Gas Pilot
Model: HS

HOTSPOT IGNITION SYSTEM

SO Cord	
Model:	SO - _* <i>*Must specify length required at time of order</i>
Conductors:	Three electric / 1 pair Thermocouple
3 Conductor Electrical Rating:	600V
Thermocouple:	Type K (one pair)
End Connections:	None – bare ends
Pilot Mounting Brackets	
Model:	PMB-6
Fits Stack:	<ul style="list-style-type: none"> • 4" diameter • 6" diameter
Mounting Hardware:	<ul style="list-style-type: none"> • Stainless U-bolts • Stainless nuts
Bracket Material	304 Stainless
Qty Included:	One (1) set = 2 total



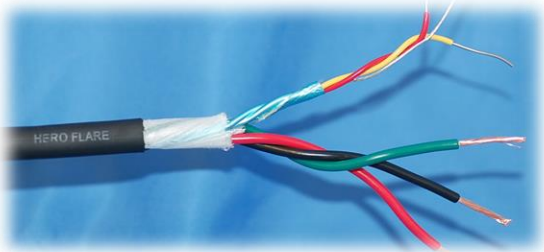
Pilot Mounting Brackets
Model: PMB-6



Hotspot Ignition Control Panel
Model shown: ES & EP



Free Standing Control Rack
Model: CRH



SO Cord
Model: SO - _*