

POWER XP

Electric LPG Vaporizer

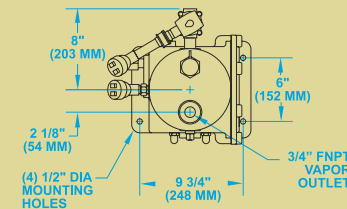


POWER XP

the power of innovation



Dimensions



Power XP Dry Electric Vaporize LPG for commercial, indus

MODEL	XP12.5	XP25	XP50	XP80
A		29-1/8" 740 mm		35-1/2" 902 mm

Waterless electric vaporizer:

- No corrosion – longer product life.
- No refilling – low maintenance, fewer parts, lower costs, minimum down time.
- No sediment – increased reliability.
- 98% thermal efficiency.

Explosion proof design:

- Can be mounted next to tank or building – no distance requirements.
- Safe!

No flame or pilot.

Works in any climate.

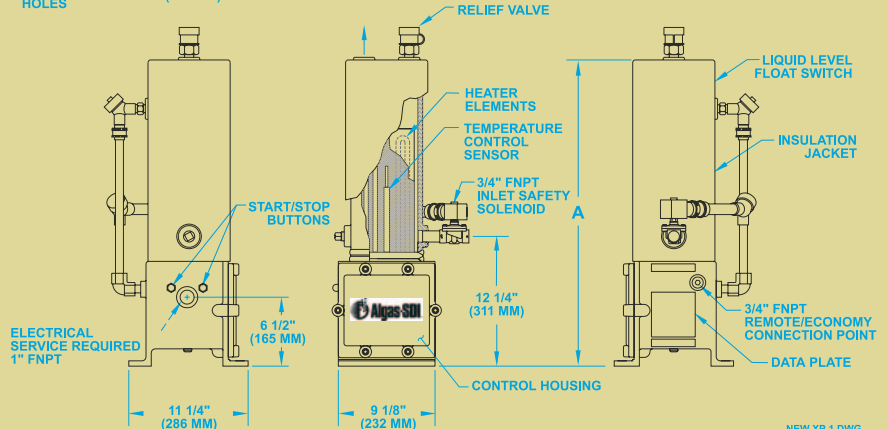
- Rated to -40 F/-40 C.
- Perfect for 100% propane to 100% butane.

Self contained:

- Requires no additional remote mounted controls for operation.
- Complete with all controls and safeties.
- Small footprint – saves space.

Instant operation:

- Requires only 45 seconds to reach operating temperature from a cold start.
- On demand heating cycle.
- Excellent for portable applications such as construction site heating.



NEW XP 1.DWG

Features

Explosion Proof-Meets class I, Division 1, Group D, Specified in National Fire Protection Association pamphlet 70.	Direct monitoring high temperature RTD sensors for operation and over temperature protection
Pressure Vessel-Designed to ASME / CE Specifications.	Mechanical heat limiters ensure no overheating
UL / CE Stamped Relief Valve Relief Valve 250 PSIG / 17.6kg / cm ²	Compact footprint size of approximately 1 ft ² (.09m ²)
Float Activated High Liquid Safety Switch.	Pressure balanced LPG supply/delivery operation
Two Independent High Temperature Safety Systems.	CE version is Nemko approved for use in Zone 1 locations
98% Thermal Efficiency.	100% turndown capability
All Models 50 / 60Hz.	Factory tested



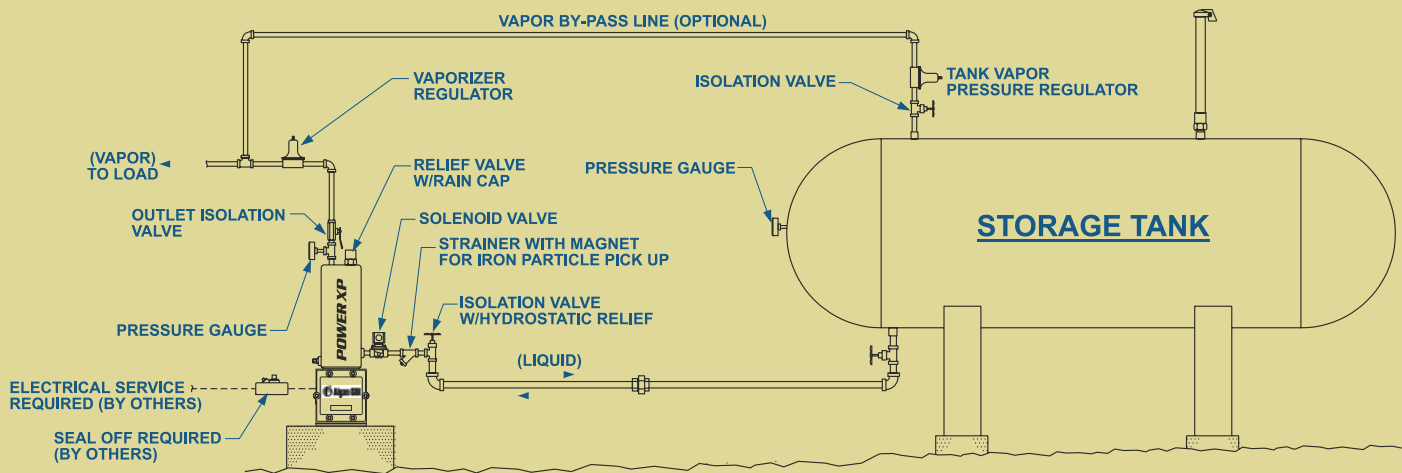
Power XP vaporizers are used in a wide variety of applications such as utilities, restaurants, industrial plants, and large hotels. The Power XP vaporizer can also operate in conjunction with a mixer to provide a standby system with uninterrupted LPG supply at peak capacity.



Power XP safely and efficiently vaporizes liquid propane gas for residential, commercial, industrial, and utility applications

NOTES

- 1) LIQUID PIPING LOSSES MUST NOT EXCEED THE HYDROSTATIC HEAD WHEN THE PUMP IS SHUT OFF.
- 2) NO CHECK VALVES IN LIQUID LINE; LIQUID MUST BE ABLE TO FLOW BOTH DIRECTIONS.



Note: No check valves in liquid line; liquid must be able to flow in both directions.

FILE: XPMAN3.DWG

Options

Auto Re-start

In the event of a power interruption, the vaporizer will re-start automatically when power is restored.

Economy

Shuts off vaporizer when natural vaporization of the tank can meet the demand.

Remote Control Box

Provides a means of controlling the vaporizer from a remote location up to 425 feet away. The control panel includes on, off, and alarm silence buttons with indicators for operational status and alarm. Intended for indoor use.

Filtaire

The Filtaire is a filtering device designed to trap heavy hydro-carbons commonly found in LPG vapor.

Valve and Strainer Package

Includes: inlet strainer with magnetic plug, inlet shut-off angle valve, hydrostatic relief valve, outlet shut-off ball valve and an outlet pressure gauge.

Pipe Away Adapter

Connects to the vaporizer allowing you to pipe away the relief valve in the event of a discharge.

XP Stand

Raises the unit approximately 1 foot off the ground for ease of control box access and removes unit from the elements surrounding it on the ground.



POWER XP SPECIFICATIONS

MODEL	XP25	XP50	XP80				
*Vaporization Capacity							
kg/hr.	50	100	160				
lbs/hr.	110	220	352				
Million BTU/hr.	2.28	4.55	7.28				
Million kcal/hr.	.57	1.14	1.83				
U.S. gallons/hr. (nominal)							
	25	50	80				
Heat Exchanger							
Surface Area	ft ²	2.9	2.9	4.3			
	m ²	.27	.27	.40			
Pressure Vessel							
Design Pressure	psig	←—————→ 250	—————→				
	kg/cm ²	←—————→ 17.6	—————→				
Test Pressure	psig	←—————→ 375	—————→				
	kg/cm ²	←—————→ 26.3	—————→				
Pressure Vessel Liquid Capacity							
U.S. gallons	.95	.95	1.6				
liters	3.61	3.61	6.0				
Operating Temperature Range							
	°F	←—————→ 160-175	—————→				
	°C	←—————→ 71-79	—————→				
Electrical Classification Class I, Division 1, Group D							
Shipping Weight							
lbs	90	90	120				
kg	41	41	54				
Electrical							
XP25							
Voltage	208	220	240	380	415		
Phase	1 & 3	1 & 3	1 & 3	3	3		
kw	5.9	6.5	7.8	6.5	7.7		
amps	28.1/16.3	29.7/17.2	32.4/18.8	9.9	10.8		
XP50							
Voltage	208	220	240	380	415	440	480
Phase	1 & 3	1 & 3	1 & 3	3	3	3	3
kw	11.7	13.1	13.0/15.6	13.1	15.6	13.1	18.8
amps	56.2/32.5	59.5/34.4	54.0/37.5	19.9	21.7	17.2	18.8
XP80							
Voltage	208	220	240	380	415	440	480
Phase	1 & 3	1 & 3	1 & 3	3	3	3	3
kw	17.8	20.0	23.8	20.0	23.8	20.0	23.8
amps	49.6	52.4	57.3	30.3	33.1	26.3	28.7

* Vaporization capacity ratings at 100 psig (7.0 kg/cm²) and at 0°F (-17.8°C) LPG with full rated voltage. Higher pressures or low temperatures may decrease the capacity accordingly. For more information, contact your ALGAS-SDI distributor or factory Customer Service (USA) representative.

Contact Your Distributor Today:



ISO 9001 Certified

1140 NW 46th Street
Seattle, Washington,
USA 98107

Phone: 206-789-5410

FAX: 206-789-5414

www.algas-sdi.com



ECLIPSE
Algas • SDI
Form XP-0503